

# RICHMOND MIDDLE SCHOOL



BLUE DEVILS



# A Message from Mr. Bartels, Principal

Welcome Back Parents and Students:

It is hard to believe the first month of school has come and gone. The start of the year has been extremely smooth.

On a different , I would like to say good bye! If you haven't heard, I have taken another job. It has been an honor and privilege for me to be a part of the Richmond Community School District for the past 24 years. I wish the students well with all their endeavors and trust me that they are in great hands with the excellent RMS Staff.

Thank you to several of you who have reached out saying you'll miss me, congratulating me for the new endeavor, and an understanding. It means a lot.

Make no mistake though, I will still be a part of the school community as my wife teaches here and my children attend RCS. Most likely you will see me at an event or even a PTA meeting.

Take care,

Keith Bartels



## A Message from Mr. Birkmeier, Dean of Students

From the Desk of Mr. Birkmeier:

Welcome Back! It is so great to be back in school. I am excited to be back and it has already been a great start. Now is a great time to talk to your student about joining one of the many academic clubs we have at Richmond Middle School. Many of the clubs are just starting the year and are looking for members. For more information visit the Richmond Middle School Website and reach out to the club advisors or myself. Go Blue Devils.

As we transition into October, I would like to let you know about a couple of important events. First, October is National Bullying Prevention Month. To help bring this to student's attention RMS uses our advisory time on Friday's to address bullying and friendships. Not only do we address this in October, but we dedicate advisory time throughout the year to bring awareness to bullying, conflict resolution, and friendships.

October is also Breast Cancer Awareness Month. Richmond Middle School has a long standing tradition of participating in Breast Cancer Fundraising campaign. Our "Pink Out" shirts are on sale now. I encourage your students to purchase a shirt. All proceeds from the shirt sales are donated to help find the cure for breast cancer. Our Pink Out day is October 27th.

Lastly, October brings our parent-teacher conferences. This year parents have the option to attend in-person or virtually. All conferences must be scheduled in advance through the link on the RMS website. Conferences are a great opportunity to check-in with teachers and see how your student is doing. Remember conferences are limited in time and are meant to be a quick check-in. If you need to have an extended conversation with your student's teacher please reach out via email to schedule a time.

It has been a great start to the school year. Thank you for your partnership. Let's continue to have an amazing school year!



# Counseling Corner

## Mrs. May

Welcome back for our 2022-2023 school year! It's been a busy September with schedule changes, NWEA starting and getting our new students acclimated to RMS. We had several students submit schedule change requests by the deadline of the end of the first week of the new semester. We were able to meet about 85% of those requests. I love that we have so many different elective options for our students. Many of our new students and families comment on the great course selections we offer here when they are enrolling.

We have also started our fall NWEA testing. NWEA gives us valuable data as a snapshot of what the student knows and is ready to learn. It is an adaptive test, meaning that if a student is answering questions correctly, it will give them harder questions to see if they know the next level. It has an amazing range of levels, which, in turn, gives the teachers meaningful data regarding what each student is ready to learn. This also helps us to identify students that need extra help in a particular area.

We do our best to have students take their NWEA tests during their class time with their subject area teacher. For example, students take their Math NWEA during their math class. We also spread out the testing schedule so students are not taking all of the NWEA tests on the same day. This helps our students to be able to focus on the test with their regular teacher while also having a regular schedule for the rest of their day. They also don't have to spend several hours on testing in a single day with this schedule. We have found that testing in this way helps the students to feel more relaxed and comfortable testing. This schedule also gives the students their normal class time in all of their other classes.

For more information about what NWEA is, go to: <https://www.nwea.org/the-map-suite/family-toolkit/>

Mrs. May



# SPIRIT DAYS





# Club News

## Yearbook:

\$25 per yearbook. Orders due by December 12th. Please refer to the picture to the right to place an order.

## Green Team:

Green Team has started their weekly paper recycling. Green Team applications are available and due by September 30th.

## Builder's Club:

Builder's Club applications are available. Students need to turn them in by September 30th.

## Web:

The year got off to a great start:) Our WEB Leaders and fourth grade buddies really enjoyed building relationships through lots of fun activities. WEB LEADERS are looking forward to our first official meeting in October.

## Student Council:

Friday September 23rd ended the selection process for Student Council Representatives. All representatives will meet on October 3<sup>rd</sup> for our first meeting. Student Council Representatives will then have the opportunity to see a calendar of all the events we do throughout the year. Meetings will continue to be the first Mondays of the month.

## Peer to Peer:

Our first Lunch/Recess session will be held on October 21st during all grade lunches. If you would like to take part, make sure to have your permission slips turned into Ms. W by then!

## 2022-2023 *Richmond MS Yearbook*



**\$25 per book**  
Thru 12/12/2022



To order your **yearbook**, visit  
[www.KaiserStudio.com](http://www.KaiserStudio.com)  
Click "Order Pictures";  
Select the "Order Pictures Here" option;  
Enter the School ID Code (to the right):

**KS KAISER STUDIO**  
SCHOOL PORTRAITS & YEARBOOKS  
1825 Birchwood Drive • Troy, Michigan 48063

Customer Service:  
Mon-Fri 8:30am - 4pm - (248)619-9119

School ID Code:

**23RMSYB**





# Club News

## Spanish Club:

The 4th and 5th grade RMS Spanish Club will have their first meeting November 1<sup>st</sup>. Flyers were sent home and the club is now full. Emails will be sent to let the students know that their permission slip was received. They will learn about Día de Los Muertos and create their own Papel Picado. Get ready to see their hard work outside of Room 303. The Spanish Club will meet approximately once a month for the duration of the school year. At each meeting, we will explore different Spanish speaking countries and holidays. For example, la navidad, el año nuevo, cinco de mayo y mucho mucho mas."



## SPANISH CLUB

Tentative Calendar 2022-2023



<u>DATE</u>	<u>EVENT</u>
November 1 <sup>st</sup>	Day of the Dead MEETING 2:45pm-3:30pm
December 6 <sup>th</sup>	Mexico MEETING 2:45pm-3:30pm
January 10 <sup>th</sup>	Argentina MEETING 2:45pm-3:30pm
February 7 <sup>th</sup>	Costa Rica MEETING 2:45pm-3:30pm
March 7 <sup>th</sup>	Dominican Republic MEETING 2:45pm-3:30pm
May 2 <sup>nd</sup>	Fiesta and Tie Dye Shirts MEETING 2:45pm-3:30pm

## NJHS:

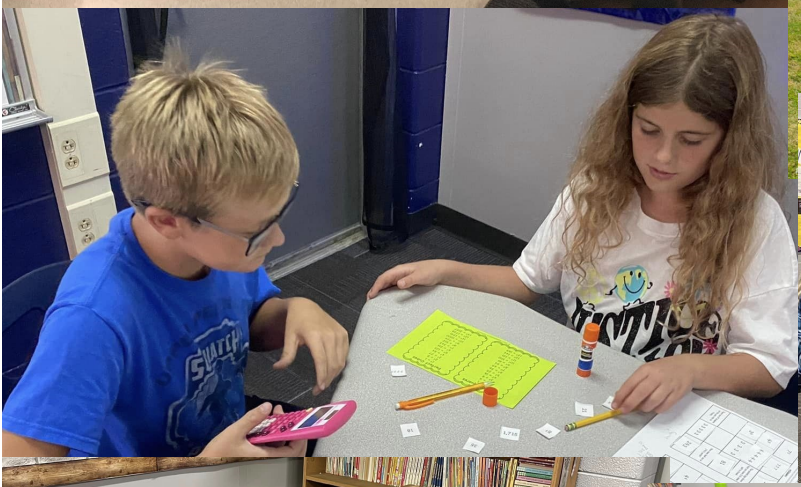
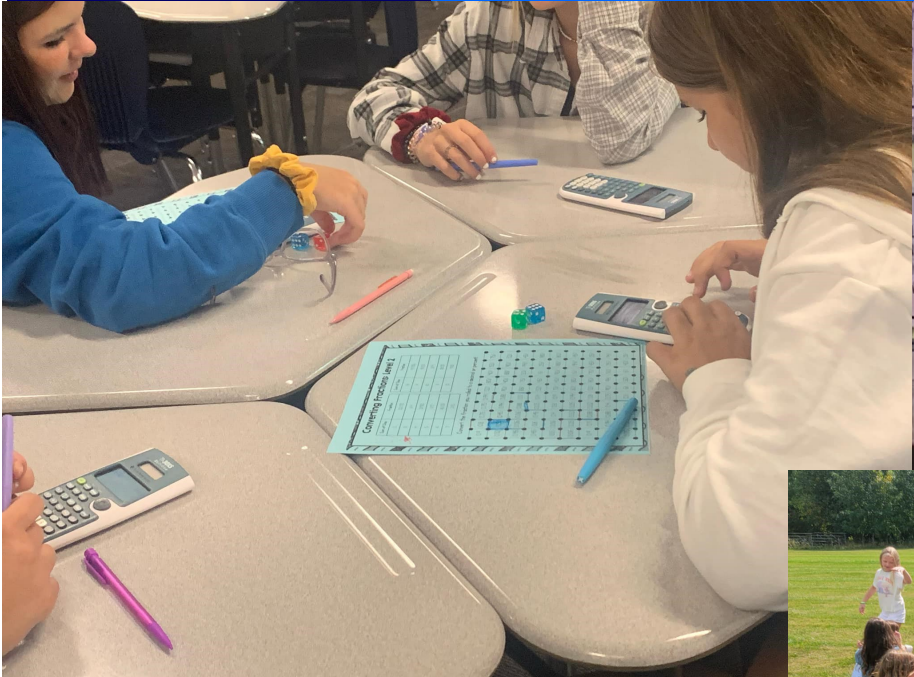
The National Junior Honor Society was excited to start the school year with a fall pep assembly that required members to fine tune their leadership skills. Members had a chance to plan a large event and 3 fun filled competitive games. The clean-up committee made sure bleachers were dry for the early morning activities. We were also happy to have 5 special Varsity Football Players to participate in the games. At our first meeting the group also nominated officers and are looking forward to elections. October will bring the first community service project, the annual Rake and Run.

## Social Studies Olympiad:

Mr. Hooks is SUPER excited to bring back Social Studies Olympiad to the middle school this year. We will have our first meeting after school on October 11.



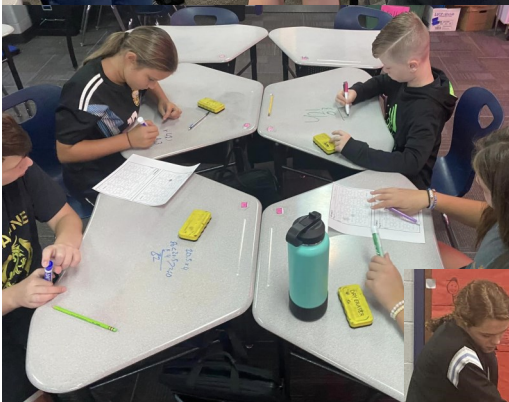
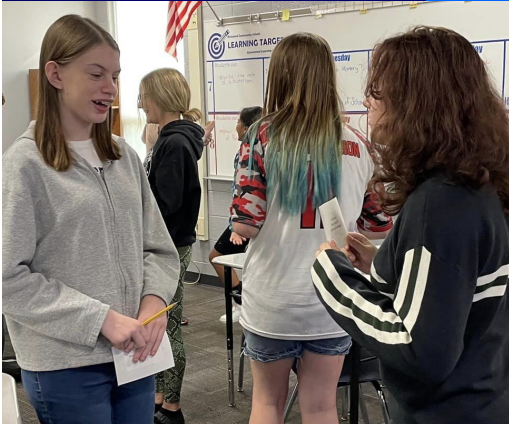
# Classroom Activities







# Classroom Activities





# SHINE Winners





# Student of the Month



## 4th Grade:

Vera Gardner

Bryce Matyniak

Katelyn Mordan

Raegan Prieskorn

Bryce Rush

## 5th Grade:

Giovanni Bugamelli

Layla Kleinhans

Mckenna Miron

Layton Turner

## 6th Grade:

Grace Madaus

Clayton Schultz

## 7th Grade:

Cruz Battani

McKenna Theut

## 8th Grade:

Madilyn Gnesda

Cameron Sutherland



## RICHMOND COMMUNITY SCHOOLS MIDDLE AND HIGH SCHOOL BREAKFAST MENU 2022-2023

Breakfast \$2.00  
MS Lunch \$3.00  
HS Lunch \$3.25  
Milk \$.55

### DAILY OFFERINGS

Assorted WG Pop Tarts

Assorted WG Breakfast Breads

Assorted WG Fruit Frudel

WG Mini Cinnamon Rolls

WG Donuts

WG Breakfast Biscuit

WG Bagel w/ Cream Cheese

Assorted WG Cereal \*

\* Includes String Cheese or  
WG Goldfish Graham

Assorted WG Muffin

Breakfast Burrito

French Toast

Students will be offered 3 of these choices per day along with Milk, Fruit and Juice.

Whole Grain (WG) cereals will include (reduced sugar varieties): Cinnamon Toast Crunch, Golden Grahams, Lucky Charms, Honey Nut Cheerios, Trix.

WG Donuts will include: WG Yeast Rings, Mini Chocolate Donuts, and Mini Powdered Donuts

WG Pop Tarts will include: Cinnamon, Fudge, Strawberry

Fresh Fruit will include: apples, oranges, bananas, pears, grapes, watermelon, cantaloupe, pineapple

100% fruit juice will include: Apple, Grape, Orange, Fruit Punch

Choice of milk: Fat Free or 1% unflavored, Fat Free Chocolate or Strawberry flavored.

A reimbursable breakfast meal includes choice of entrée, choice of fresh fruit and juice and choice of milk.

\* A 1/2 Cup serving of fruit or vegetable is required with every reimbursable meal

\*Menu subject to change without notice.\*

### OTHER IMPORTANT INFORMATION:

#### MEAL MAGIC

Richmond Community Schools uses a computerized cash register/point of sale system called "Meal Magic" that allows us to confidentially monitor student accounts, meal benefits, food allergies and food restrictions. High School and Middle School students will use their ID card or enter their student ID number on a key pad to make purchases of meals and a la carte items. Elementary students either use an ID card or are identified by name. Students should have their ID and money ready when they reach the cashier.

#### PAYMENTS

Recommended form of payment for meals is by check or online using a debit/credit card, but cash is also accepted. If sending a payment to the school, please put it in a sealed envelope with the student's name, grade and the amount of the deposit on the front of the envelope. Deposits can be accepted for a family if the individual student names and schools are listed. No change will be given from a deposit. Our point of sale system supports a history of deposits and sales for each student and allows parents to set limits on sales.

#### PAYMENTS/MEAL TRANSACTION REPORT

Deposits may be made online at <https://eps.mvphbanking.com/cgi-bin/efs/login.pl?access=55665> or at [www.SendMoneyToSchool.com](http://www.SendMoneyToSchool.com). Both sites allow you to deposit money in your student's account and to view account balances and meal purchases within 24 hours.

There is a transaction fee to deposit money, but it is free to view or set limits for your child's account. In order to access accounts, you will need to set up a free account and obtain your student's ID number. Please call your school office or the Food Service Department at (586) 727-2662 to obtain the ID number. Deposits may take up to 15 minutes to be posted to a child's account. If you would like to restrict the amount of money your child spends on a daily basis or if you would like to restrict their snacks, you may do this from either website or by contacting the Food Service Office.

#### CHARGING POLICY

Please see the student handbook for the district charging policy. Deposits can be made to the student's account at any time to provide your student with a full lunch when they forget their lunch money or lunch from home.

#### FREE/REDUCED APPLICATIONS

You can apply online for free or reduced-price meal benefits at [www.LunchApp.com](http://www.LunchApp.com). This is the fastest and most secure way to apply for benefits. Paper applications are available in every school office during the school day and in the cafeteria during times that meals are served. Paper applications may take up to 10 days to process. Applications are accepted at anytime throughout the school year.

#### PREVIOUS 2021/2022 SCHOOL YEAR BENEFITS

Students who were eligible for free or reduced price meals at the end of the 21/22 school year at Richmond Community Schools will automatically be eligible for meals at the beginning of the 22/23 school year until October 06, 2022. After that date, a new application must be processed and approved by the Food Service Office for students to be eligible for benefits. It may take up to 10 days to process an application before benefits become available. Families are responsible for paying for meals until an approved application is on file with the Food Service Office. Please submit new applications early to avoid a lapse of benefits. Parents and/or guardians will be notified by US mail as to the student's eligibility.

**RICHMOND COMMUNITY SCHOOLS  
MIDDLE SCHOOL LUNCH MENU — OCTOBER 2022**

Breakfast \$2.00  
Lunch \$3.00  
Milk \$ .55

MONDAY	TUESDAY	WEDNESDAY	THURSDAY	FRIDAY
<p>3 Popcorn Chicken Bowl French Bread Pizza Corn Dog Salad w/ Meat &amp; Cheese</p> <p align="center">Corn </p> <p>Romaine Salad Fresh Carrot Sticks Seasonal Fresh Fruit* Mixed Fruit</p>	<p>4 Build-a-Burger w/ Fries Bosco Sticks Chicken Patty Sandwich Deli Sub</p> <p align="center">Carrot Coins Romaine Salad Fresh Celery Sticks Seasonal Fresh Fruit* Diced Peaches</p>	<p>5 Chicken Alfredo over Roti- ni Rotini w/ Beef Meat Sauce Pizza Crunchers Salad w/ Meat &amp; Cheese</p> <p align="center">Steamed Broccoli Romaine Salad Fresh Carrot Sticks Seasonal Fresh Fruit* Pineapple Tidbits</p>	<p>6 Lil Caesar Pepperoni Pizza Lil Caesar Cheese Pizza Inside-Out Burger Chicken Sliders Deli Sub</p> <p align="center"> Green Beans Romaine Salad Fresh Celery Sticks Seasonal Fresh Fruit* Diced Pears</p>	<p>7 Soft Beef Taco Pepperoni Calzone Chicken Nuggets Strawberry PB&amp;J</p> <p align="center">Refried Beans with Cheese Romaine Salad Fresh Carrot Sticks Seasonal Fresh Fruit* Applesauce</p>
<p>10 Chicken &amp; Waffles French Bread Pizza Corn Dog Salad w/ Meat &amp; Cheese</p> <p align="center">Corn Romaine Salad Fresh Carrot Sticks Seasonal Fresh Fruit* Mixed Fruit</p>	<p>11 Chili Cheese Fries Bosco Sticks Chicken Patty Sandwich Deli Sub</p> <p align="center">Carrot Coins Romaine Salad Fresh Celery Sticks Seasonal Fresh Fruit* Diced Peaches</p>	<p>12 Half Day No Lunches Served</p> <p>13 Half Day No Lunches Served</p> <p align="center"></p>		<p>14 Half Day No Lunches Served</p>
<p>17 Chicken Drumstick w/ Mashed Potatoes &amp; Gravy French Bread Pizza Corn Dog Salad w/ Meat &amp; Cheese</p> <p align="center">Corn Romaine Salad Fresh Carrot Sticks Seasonal Fresh Fruit* Mixed Fruit</p>	<p>18 Hot Dog w/ Fries Bosco Sticks Chicken Patty Sandwich Deli Sub</p> <p align="center"> Carrot Coins Romaine Salad Fresh Celery Sticks Seasonal Fresh Fruit* Diced Peaches</p>	<p>19 Lasagna Rotini w/ Beef Meat Sauce Pizza Crunchers Salad w/ Meat &amp; Cheese</p> <p align="center"> Steamed Broccoli Romaine Salad Fresh Carrot Sticks Seasonal Fresh Fruit Pineapple Tidbits</p>	<p>20 Lil Caesar Pepperoni Pizza Lil Caesar Cheese Pizza Inside-Out Burger Chicken Sliders Deli Sub</p> <p align="center"> Green Beans Romaine Salad Fresh Celery Sticks Seasonal Fresh Fruit</p>	<p>21 Walking Taco Pepperoni Calzone Chicken Nuggets Strawberry PB&amp;J</p> <p align="center">Refried Beans with Cheese Romaine Salad Fresh Carrot Sticks Seasonal Fresh Fruit Applesauce</p>
<p>24 Sweet &amp; Sour Chicken over Brown Rice French Bread Pizza Corn Dog Salad w/ Meat &amp; Cheese</p> <p align="center">Carrot Coins Romaine Salad Fresh Carrot Sticks Seasonal Fresh Fruit* Mixed Fruit</p>	<p>25 Breakfast for Lunch Bosco Sticks Chicken Patty Sandwich Deli Sub</p> <p align="center">Hash Brown Potato Romaine Salad Fresh Celery Sticks Seasonal Fresh Fruit* Diced Peaches</p>	<p>26 Frito Joe  Rotini w/ Beef Meat Pizza Crunchers Salad w/ Meat &amp; Cheese</p> <p align="center">Steamed Broccoli Romaine Salad Fresh Carrot Sticks Seasonal Fresh Fruit* Pineapple Tidbits</p>	<p>27 Lil Caesar Pepperoni Pizza Lil Caesar Cheese Pizza Inside-Out Burger Chicken Sliders Grape PB&amp;J Deli Sub</p> <p align="center"> California Blend Vegetables Romaine Salad Fresh Celery Sticks Seasonal Fresh Fruit* Diced Pears</p>	<p>28 Nacho Grande Pepperoni Calzone Chicken Nuggets Grape PB&amp;J</p> <p align="center">Refried Beans with Cheese Romaine Salad Fresh Carrot Sticks Seasonal Fresh Fruit* Applesauce</p>
<p>31 Sweet &amp; Sour Chicken over Brown Rice French Bread Pizza Corn Dog Salad w/ Meat &amp; Cheese</p> <p align="center">Carrot Coins Romaine Salad Fresh Carrot Sticks Seasonal Fresh Fruit* Mixed Fruit</p>	<p>Each meal includes choice of entrée, milk, one cup of vegetable items and 1/2 cup of fruit items. A fruit or vegetable serving is required with every reimbursable meal. Seasonal fresh fruit selections will include apples, oranges, watermelon, cantaloupe, bananas, pears, grapes, pineapple.</p> <p>Milk choices include fat free or 1% unflavored or fat free chocolate or strawberry flavored.</p> <p align="center">*Menu Subject to Change Without Notice*</p> <p>Nutritional information is available on the Food Service web page of the Richmond Community School District Website.</p> <p align="center">*USDA is an equal opportunity provider and employer.*</p>			
			<p> <b>Product of Michigan</b></p> <p><i>Richmond Community Schools Will participate in MI Farm to School. (*) = food choice utilizing MI based items.</i></p>	<p></p>



# ATHLETICS

**V** Wednesday, September 14<sup>th</sup> @ RHS  
**O** Monday, September 19<sup>th</sup> @ Imlay City HS  
**L** Wednesday, September 21<sup>st</sup> @ RHS  
**L** Monday, September 26<sup>th</sup> @ Almont HS  
**E** Wednesday, September 28<sup>th</sup> @ Yale Public Schools  
**Y** Monday, October 3<sup>rd</sup> @ Cros/Lex HS  
**B** Wednesday, October 5<sup>th</sup> @ Armada HS  
**A** Monday, October 10<sup>th</sup> @ Cros/Lex HS  
**L** Wednesday, October 12<sup>th</sup> @ Yale Public Schools  
**L** Monday, October 17<sup>th</sup> @ Algonac HS  
**L** Wednesday, October 19<sup>th</sup> @ Armada HS  
**L** Thursday, October 20<sup>th</sup> @ North Branch HS

**F**  
**O**  
**O** Thursday, September 8<sup>th</sup> @ Richmond HS / 4:30 pm  
**T** Thursday, September 15<sup>th</sup> @ Richmond HS / 4:30 pm  
**B** Thursday, September 22<sup>nd</sup> @ Imlay City HS / 4:30 pm  
**A** Thursday, September 29<sup>th</sup> @ Richmond HS / 4:30 pm  
**L** Thursday, October 6<sup>th</sup> @ Richmond HS / 4:30 pm  
**L** Thursday, October 13<sup>th</sup> @ Armada HS @ 4:30 pm  
**L** Thursday, October 20<sup>th</sup> @ Richmond HS / 4:30 pm

**C**  
**R**  
**O** Tuesday, September 13<sup>th</sup> @ Imlay City / 3:30 pm  
**S** Saturday, September 17<sup>th</sup> Holly-Duane Raffin  
**S** Festival of Races @ 7:40 am  
**C** Tuesday, September 20<sup>th</sup> ICMS Pickle Run  
**O** Friday, September 23<sup>rd</sup> New Balance Mid Season  
**U** Spectacular @ 5 pm  
**N** Tuesday, September 27<sup>th</sup> @ Cros-Lex  
**T** Thursday, October 6<sup>th</sup> @ Marysville @ 3:50 pm  
**R** Tuesday, October 13<sup>th</sup> @ Algonac  
**Y**



# CONTACT INFORMATION

**Address:**

35250 32 Mile Road

Richmond, MI 48062

**School Phone Number:**

586-727-7552

**District Web Page:**

[www.richmond.k12.mi.us](http://www.richmond.k12.mi.us)

**Board of Education**

Deborah Michon, President  
Angela Pacitto, Vice President  
Sherri Zube, Secretary  
Danielle Sutton, Treasurer  
Candess Cunningham, Trustee  
Sandra Fortuna, Trustee  
Margaret Teltow, Trustee

## Richmond Community Schools

35276 Division \* Richmond, Michigan 48062 \* (586) 727-3565 \* [www.richmond.k12.mi.us](http://www.richmond.k12.mi.us)

Brian J. Walmsley, Ed.S.  
Superintendent

**Richmond Early Childhood Learning Center  
& Will L. Lee Elementary School**  
68399 Forest  
Richmond, Michigan 48062  
Heidi Mangune, Principal

**Richmond Middle School**  
35250 Division  
Richmond, Michigan 48062  
Keith Bartels, Principal

**Richmond High School**  
35320 Division  
Richmond, Michigan 48062  
Andrea Szabo, Principal

*Guaranteed Learning for All Students!*

In compliance with Title VI of the Civil Rights Act of 1964, Title IX of the Education amendments of 1972, Section 504 of Rehabilitation Act of 1973, the Age Discrimination Act of 1975, Title II of the Americans with Disability Act of 1990, and Elliott-Larsen Civil Rights Act of 1977, it is the policy of the Richmond Community School District that no person shall, on the basis of race, color, religion, military status, national origin or ancestry, sex (including sexual orientation), disability, age (except as authorized by law,) height, weight, or marital status be excluded from participation in, be denied the benefits of, or be subjected to, discrimination during any program, activity, service or employment. Inquiries related to any nondiscrimination policies should be directed to the Superintendent, 35276 Division Road, Richmond, MI 48062, (586) 727-3565.